



**Beaufort County**  
**Public Works**  
**Stormwater Infrastructure**  
*Project Summary*

**Project Summary:** Trask Parkway Channel #2

**Activity:** Routine/Preventive Maintenance

**Narrative Description of Project:**

Removed blockages from flowline. Replaced (3) access pipes. Repaired washouts. Installed rip rap for erosion control.

**Duration:** 7/19/16 - 1/23/17

<b>2017-500 / Trask Parkway Channel #2</b>	<b>Labor Hours</b>	<b>Labor Cost</b>	<b>Equipment Cost</b>	<b>Material Cost</b>	<b>Contractor Cost</b>	<b>Indirect Labor</b>	<b>Total Cost</b>
APREM / Access pipe - removed	14.0	\$323.33	\$82.46	\$30.56	\$0.00	\$215.04	\$651.39
APRPL / Access pipe - replaced	88.0	\$1,955.88	\$373.08	\$2,474.06	\$0.00	\$1,217.36	\$6,020.38
AUDIT / Audit Project	0.5	\$11.75	\$0.00	\$0.00	\$0.00	\$6.62	\$18.36
HAUL / Hauling	83.0	\$1,864.65	\$767.56	\$2,097.74	\$0.00	\$1,210.42	\$5,940.37
RB / Remove blockage from flowline	10.0	\$230.95	\$18.00	\$3.96	\$0.00	\$153.60	\$406.51
RPWO / Repaired Washout	70.0	\$1,602.05	\$364.32	\$116.44	\$0.00	\$989.95	\$3,072.76
RRI / Rip Rap - Installed	40.0	\$903.40	\$192.97	\$65.24	\$0.00	\$563.30	\$1,724.91
STAGING / Staging Materials/Equipment	42.0	\$910.26	\$199.48	\$59.40	\$0.00	\$532.60	\$1,701.74
<b>2017-500 / Trask Parkway Channel #2 Sub Total</b>	<b>347.5</b>	<b>\$7,802.27</b>	<b>\$1,997.87</b>	<b>\$4,847.40</b>	<b>\$0.00</b>	<b>\$4,888.88</b>	<b>\$19,536.42</b>
<b>Grand Total</b>	<b>347.5</b>	<b>\$7,802.27</b>	<b>\$1,997.87</b>	<b>\$4,847.40</b>	<b>\$0.00</b>	<b>\$4,888.88</b>	<b>\$19,536.42</b>

Before



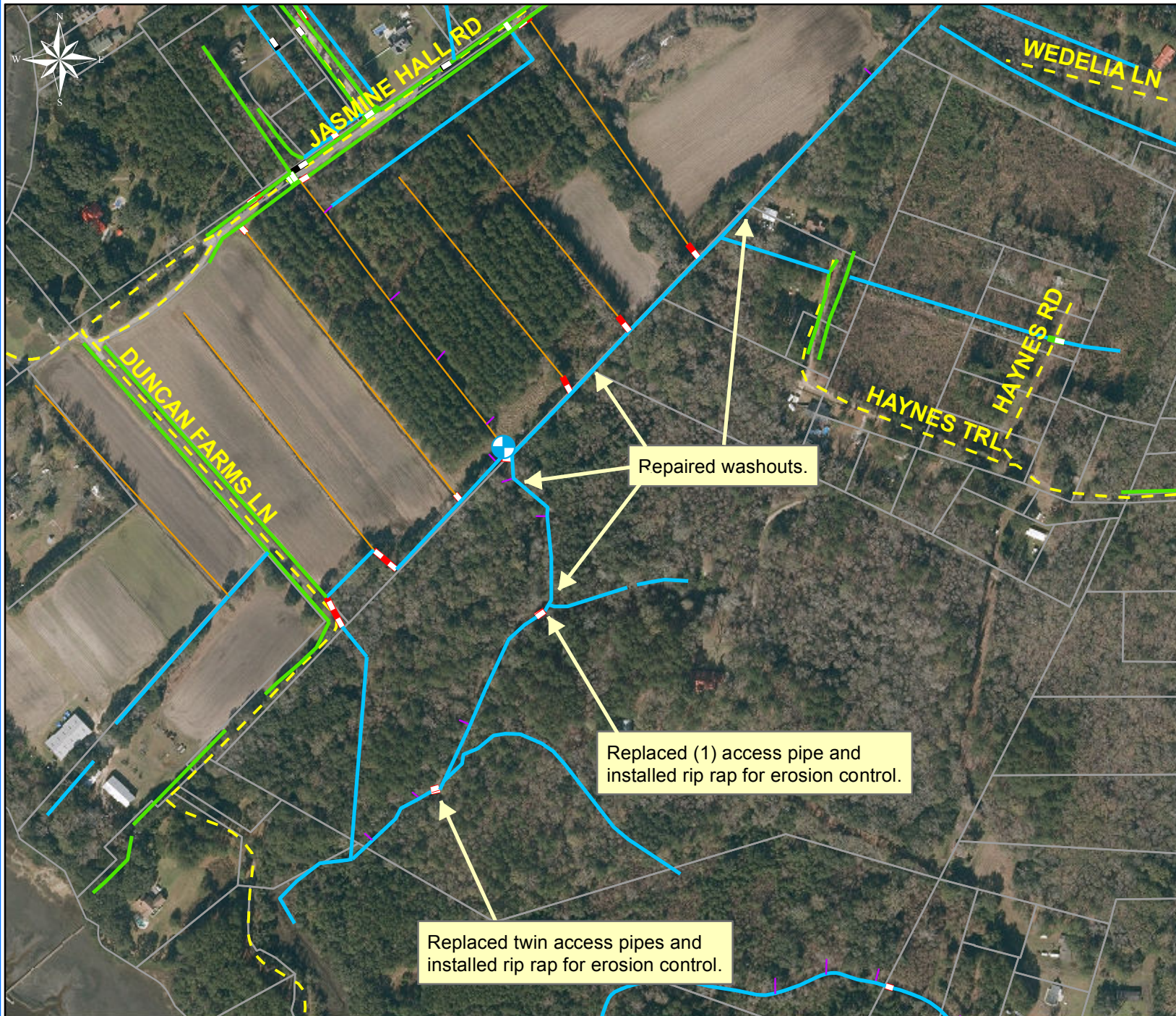
During



After







Project: Trask  
Parkway Channel  
#2  
Map #1

Activity: Routine/  
Preventive  
Maintenance

Project #:  
2017-500

Township/SW Dist:  
Sheldon/5

Completed:  
January 2017

### Legend

#### Drainage Type

- Access Pipe
- Bleeder Pipe
- Channel Pipe
- Channel
- Stream
- Crossline Pipe
- Driveway Pipe
- Lateral
- Lateral Pipe
- River
- Road Pipe
- Roadside
- Roadside Pipe

0 100 200 400 600 800  
Feet

1 inch = 420 feet

Prepared By: BC Stormwater Management Utility

Date Print: 04/04/17

File: C:\project summaries map\Trask Parkway Channel #2 Map#1\_2017-500





Project: Trask  
Parkway Channel  
#2  
Map #2

Activity: Routine/  
Preventive  
Maintenance

Project #:  
2017-500

Township/SW Dist:  
Sheldon/5

Completed:  
January 2017

#### Legend

##### Drainage Type

- Access Pipe
- Bleeder Pipe
- Channel Pipe
- Channel
- Stream
- Crossline Pipe
- Driveway Pipe
- Lateral
- Lateral Pipe
- River
- Road Pipe
- Roadside
- Roadside Pipe

0 100 200 400 600 800  
Feet

1 inch = 420 feet

Prepared By: BC Stormwater Management Utility

Date Print: 04/04/17

File: C:\project summaries map\Trask Parkway Channel #2 Map#2\_2017-500